
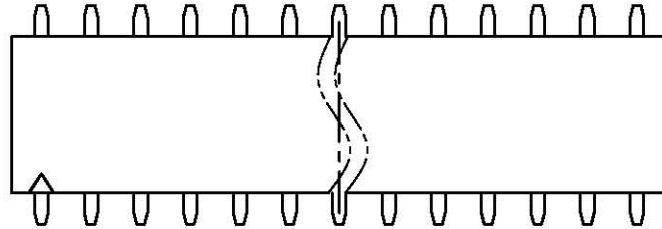


REV.	DESCRIPTION	DRAWN	CHECKED	APPROVED
A	NEW RELEASE	YCH 10/22/09'		

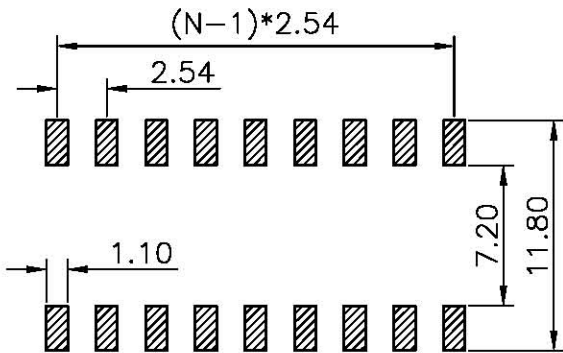
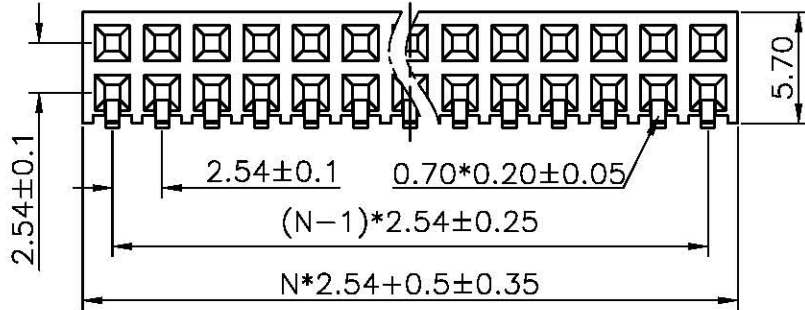
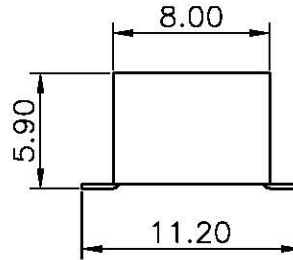
N=NUMBER OF CONTACTS/2




NOTES:

- ELECTRICAL CHARACTERISTICS:
 - CONTACT RESISTANCE: 20mΩ Max. INITIAL.
 - DIELECTRIC WITHSTANDING VOLTAGE: 500V AC(rms) FOR 1 MINUTE.
 - INSULATION RESISTANCE: 1000MΩ Min.
- ENVIRONMENT CHARACTERISTICS:
 - OPERATING TEMPERATURE: 0°C~+85°C.
 - STORAGE TEMPERATURE: -20°C~+70°C.
- PART NUMBER: DS1024-06
- PRODUCT NUMBER CODE:
DS1024-06 - X X X X

HOUSING COLOR
B:BLACK
CONTACT PLATING
8: FULL GOLD FLASH
CONNECTOR TYPE
S:SOCKET
No.OF CONTACTS
2*1-2*40



(TOLERANCE=±0.05)
RECOMMEND PCB LAYOUT

GENERAL TOLERANCE		ANGLE TOLERANCE		PROJECTION		TITLE	FEMALE HEADER PITCH 2.54mm	
X.	±0.60	X.	±5'	UNITS	mm	SMT TYPE		
.X	±0.38	.X	±3'	SHEET SIZE	A4	SERIES	DS1024-06 SERIES	
.XX	±0.25	.XX	±2'					
DRAWING TYPE		CUSTOMER						
SCALE		1:1	SHEET	1 OF 1				
DRAWING NO.		C-DS1024-06-XXXX						