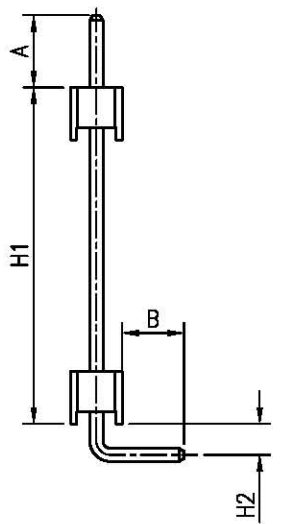
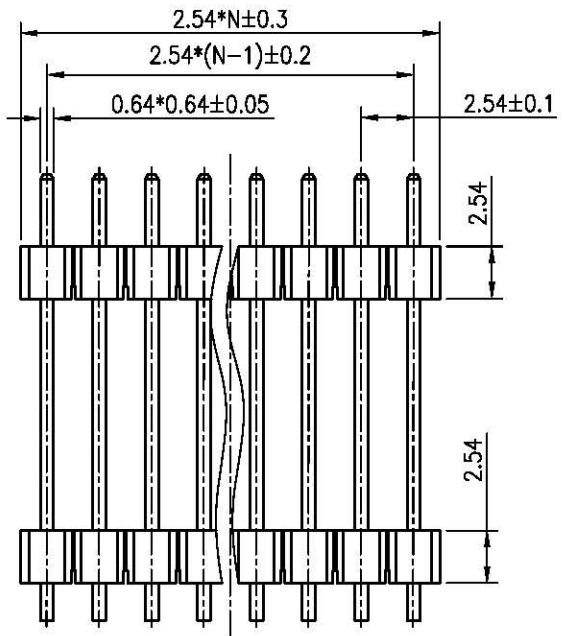
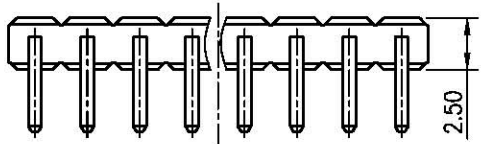


REV.	DESCRIPTION	DRAWN	CHECKED	APPROVED
A	NEW RELEASE	YCH 05/19/08'	~	



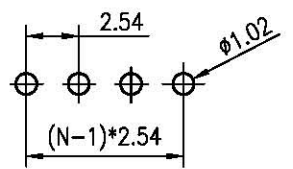
NOTES:

- MATERIAL
 - INSULATOR:PA-46(UL 94V-0).
 - CONTACT MATERIAL:COPPER ALLOY.
- SPECIFICATION
 - CURRENT RATING:1.5 Amp.
 - INSULATION RESISTANCE:1000MΩ Min.
 - DIELECTRIC WITHSTANDING:600VAC.
 - CONTACT RESISTANCE:50mΩ Max.
 - OPERATING TEMPERATURE:-40°C TO+105°C.
- PART NUMBER: DS1029-02
- PRODUCT NUMBER CODE:
 DS1029-02 - X X X X X X
 DIM.A B H1 H2 YPE
 1: TYPE 1
 2: TYPE 2
 MOUNTING TYPE
 R: RIGHT ANGLE TYPE
 HOUSING COLOR
 B:BLACK
 CONNECTOR PLATING
 8: FULL GOLD FLASH
 CONECT TYPE
 P: PLUG
 No.OF CONTACTS
 1*1-1*40
 SERIES No.
 DS1029-02



N: NUMBER OF CONTACTS

TYPE	DIM A	DIM B	DIMH1	DIM H2	PIN LENGTH
1	3.50	3.00	16.33	1.50	25.10
2	3.50	3.00	6.33	1.50	15.10
3					
4					
5					
6					
7					
8					
9					
10					
11					
12					



RECOMMEND PCB LAYOUT(TOLERANCE=±0.05)

GENERAL TOLERANCE		ANGLE TOLERANCE		PROJECTION		TITLE	2.54mm PITCH PIN HEADER SINGLE ROW RIGHT ANGLE
X.	±0.60	X.	±5°	UNITS	mm	SHEET SIZE	A4
.X	±0.38	.X	±3°	SHEET SIZE	A4	SERIES	DS1029-02 SERIES
.XX	±0.25	.XX	±2°	DRAWING TYPE			
DRAWING TYPE		CUSTOMER		SCALE			
SCALE		1:1		SHEET		1 OF 1	
DRAWING NO.		C-DS1029-02-XXXXXX					