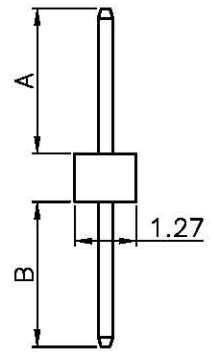
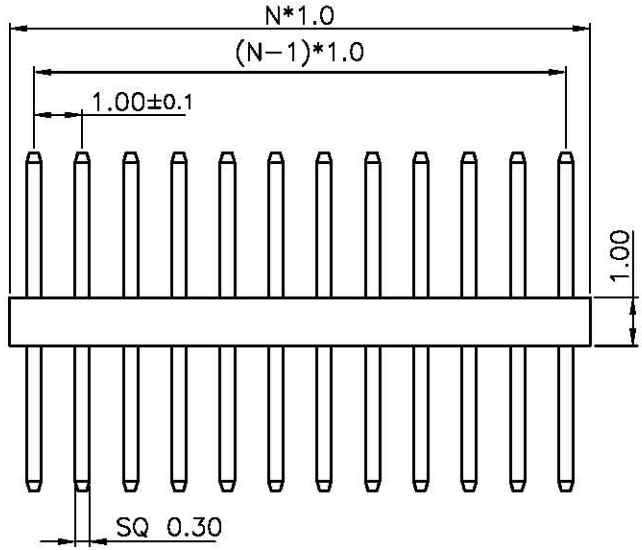
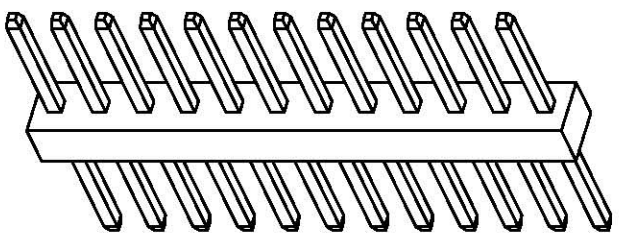


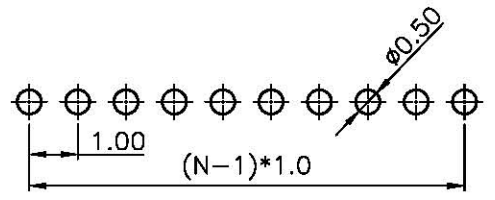
REV.	DESCRIPTION	DRAWN	CHECKED	APPROVED
A	NEW RELEASE	YCH 03/24/09	~	



- NOTES:
- MATERIAL
    - INSULATOR:PA-46(UL 94V-0).
    - CONTACT MATERIAL:COPPER ALLOY.
  - SPECIFICATION
    - CURRENT RATING:1.0 Amp.
    - INSULATION RESISTANCE:500MΩ Min.
    - DIELECTRIC WITHSTANDING:300VAC.
    - CONTACT RESISTANCE:20mΩ Max.
    - OPERATING TEMPERATURE:-45°C TO+110°C.
  - PART NUMBER: DS1031-17
  - PRODUCT NUMBER CODE:  
 DS1031-17 - X X X X X X  
 DIM.A B TYPE  
 1: TYPE 1  
 MOUNTING TYPE  
 V: VERTICAL TYPE  
 HOUSING COLOR  
 B:BLACK  
 CONTACT PLATING  
 8: FULL GOLD FLASH  
 CONNECTOR TYPE  
 P:PLUG  
 No.OF CONTACTS  
 1\*1-1\*40



TYPE	DIM A	DIM B
1	3.00	3.00
2		
3		
4		
5		
6		
7		
8		
9		
10		



RECOMMEND PCB LAYOUT(TOLERANCE=±0.05)

GENERAL TOLERANCE		ANGLE TOLERANCE		PROJECTION		TITLE	SINGLE ROW PIN HEADER	
X.	±0.60	X.	±5°	UNITS	mm	PITCH 1.00mm V/T TYPE		
.X	±0.38	.X	±3°	SHEET SIZE	A4	SERIES	DS1031-17 SERIES	
.XX	±0.25	.XX	±2°					
DRAWING TYPE		CUSTOMER						
SCALE		1:1	SHEET	1 OF 1				
DRAWING NO.		C-DS1031-17-XXXXXX						